



ECONOMICS & BUSINESS EDUCATORS NSW

An affiliate member of Business Educators Australasia Inc.

SERVING MEMBERS SINCE 1968

ABN 29 002 677 750

3B Smalls Road RYDE NSW 2112

Phone (02) 9886 7786 - Fax (02) 9886 7673

Email : admin@ebe.nsw.edu.au ~ Website : www.ebe.nsw.edu.au

PRESIDENT'S REPORT TO THE 2017 ECONOMICS AND BUSINESS EDUCATORS NSW ANNUAL GENERAL MEETING (11 DECEMBER 2017)

It is my pleasure to present the Economics and Business Educators NSW (EBE NSW) President's Report for 2017. Since the last EBE Annual General Meeting (AGM) in December 2016, it has been an exciting, productive and successful year for EBE NSW as we have sought to serve our members and their students and support them in the classroom as they have taught the NSW Education Standards Authority (NESA) Economics, Business Studies, Legal Studies and Commerce courses, providing them with high quality educational services.

We have successfully implemented our **Strategic Plan 2015-2017** which communicates the vision of EBE NSW:

- “Inspire teachers to be passionate and dynamic Economics, Business, Legal and Commerce educators.”

The three strategic pillars in the strategic plan are:

- Professional growth (Goal: Develop teacher capacity in Economics, Business, Legal and Commerce education)
- Networking (Goal: Build a supportive network for Economics, Business, Legal and Commerce educators)
- Advocacy (Goal: Act as a voice on matters of significance to Economics, Business, Legal and Commerce educators)

Evidence of our success in these areas follows in this report.

EBE NSW would be unable to achieve its vision and goals without the knowledge, skills and time of the educators who are members of the **EBE NSW Board of Directors**. Thirteen educators made up the Board of Directors during the last year:

- Mr Joe Alvaro
- Mr Ben Andersen
- Mr Andrew Athavle
- Ms Cheryl Brennan
- Ms Wendy Mockler Giles
- Mr Nicholas Gliddon
- Mr Greg Hannelly
- Mr Kenson Low
- Ms Mai Ni Pham
- Ms Leith Thompson
- Mr Glenn Walker
- Mr Nicholas Ward
- Ms Tania White

We had a diverse Board with educators from government, Catholic, Christian and independent schools. All Directors serve on a pro-bono basis. Cheryl Brennan and myself also sit on the Board of the Directors of the Professional Teachers' Council NSW (the coordination and consultancy body for professional teacher associations in NSW), of which we are a member organization. I also sit on the Board of our national subject association, Business Educators Australasia, as the NSW representative. This diversity enables EBE NSW to better serve the interests of all members and remain strategically focused as it carries out its activities and faces the challenges in the current educational environment.

Full Board meetings were held twice every school term and Board members also communicated regularly online.

We were able to recognize an EBE NSW Director, Nicholas Ward, this year at the 2017 Professional Teachers' Council NSW Presentation Evening. Nicholas was presented with an Outstanding Beginning Teacher Award in recognition of his significant contribution to the support of Economics, Business Studies, Legal Studies and Commerce teachers in NSW through Economics and Business Educators NSW (EBE NSW), as a Director since 2014. As a beginning teacher, Nicholas has used his role at EBE NSW to advance the teaching profession and serve other educators, including being a positive role model to other beginning teachers. Congratulations Nicholas.

EBE NSW Director Wendy Mockler-Giles was awarded a \$15 000 NSW Government Premier's Reserve Bank of Australia Economics Scholarship this year. Wendy is seeking to address the dramatic drop in high school Economics enrolment numbers, particularly among girls. We look forward to the results of Wendy's research. Congratulations Wendy.

I would like to thank all the Board members for all their work and willingness to give to and share with the teaching profession and assist teachers to improve student learning outcomes. It is not always easy juggling the demands of a full time job and carrying out the important and useful work we do for EBE NSW on a pro bono basis, and I would like to acknowledge the

contributions of all Board members. I also add a vote of thanks to Board members who carried out the added responsibilities as an Executive Board member. Thank you to Cheryl Brennan (Vice – President) and Tania White (Treasurer).

EBE NSW membership numbers continue to be strong. Our members are made up of teachers in both government and non – government schools in NSW, teachers from Australian international schools overseas, student teachers and members in the “business/corporate” category. As at 16 August 2017 our total membership was 407 (this figure includes individual memberships, school/library memberships and business/corporate memberships). While our membership figures remain healthy overall, there is potential to increase these numbers and engage those teachers in schools who are not members. In addition, our student teacher members could be increased. We envisage more teachers will apply to be members of EBE NSW in the future as they seek ways to address the Australian Professional Standards for Teachers.

I wish to thank our members for their support of the association and participation in our activities this year. In all our activities our top priority is meeting and exceeding the expectations of our members.

EBE NSW is passionate about the subject matter in the **courses** it represents and supports and considers these courses critical for a relevant and balanced school curriculum. EBE NSW continues to support teachers of the junior secondary elective course, Commerce. This course continues to be popular with young people and plays an important role in increasing the knowledge and skills of young people in the areas of consumer and financial literacy, enterprise, law, and civics and citizenship. Quality support also continues for the senior courses our members teach – Economics, Business Studies and Legal Studies.

The strength and sustainability of the teaching profession is directly related to the quality of our teachers. Good teachers never stop learning. This is why designing and conducting professional development courses is our core activity. EBE NSW continues to provide members with access to effective, syllabus friendly, classroom focused and cost friendly **professional development courses** to assist teachers in providing meaningful and engaging learning experiences in the classroom. We are especially committed to supporting beginning teachers as they face the challenging and demanding early years of teaching. It has been a year of strong member involvement with regards to our professional development courses. We have implemented a busy professional development program this year carefully prepared to meet the professional learning needs of teachers:

1. *“ Teaching the Preliminary Course (Year 11) in Economics or Legal Studies for the first time? - 3 March 2017*
2. *“ Teaching the Preliminary Course (Year 11) in Business Studies for the first time?” - 8 March 2017*
3. *“ Revamping and Resourcing Commerce” – 29 March 2017*
4. *“ 2017 EBE NSW Economics Update Conference” – 26 May 2017*

5. *2017 EBE NSW Annual Conference* – 21 July 2017
6. *Field Trip – Law Day Out for Legal Studies and Commerce Teachers* – 25 August 2017
7. *Teaching the HSC Course (Year 12) in Economics or Legal Studies for the First Time?*
– 30 August 2017
8. *Teaching the HSC Course (Year 12) in Business Studies for the First Time?*
– 14 September 2017
9. *2017 EBE NSW Legal Update Conference* – 28 November 2017

Thank you to all the EBE NSW Board members who convened our professional development courses this year and who designed and presented sessions at these events, enabling members to benefit directly from the expertise of EBE NSW Board members (teachers in the classroom) during these courses. I also thank all our other presenters this year. All our courses are evaluated by attendees and we use this information to learn about what is working well and what needs improving. Overall evaluations this year indicated that the content of our professional development courses are meeting the professional learning needs of teachers and student teachers attending.

EBE NSW (through the Professional Teachers' Council NSW) is a NESAs endorsed provider of professional development for the maintenance of accreditation at Proficient, Highly Accomplished and Lead levels, and a number of our members use professional development hours from our courses to meet their accreditation requirements with NESAs. Courses that are endorsed are advertised on the NESAs website which enable us to benefit from this additional method of promotion.

Further professional development was available to members through the EBE NSW Helpdesk (helpdesk@ebe.nsw.edu.au) enabling them to access EBE Directors for advice and assistance in relation to the teaching and learning of Economics, Business Studies, Legal Studies and Commerce this year.

We awarded three professional learning grants this year:

- Two professional learning grants were awarded to two EBE NSW members from remote areas of NSW to attend the 2017 EBE NSW Annual Conference.
- One professional learning grant was awarded to an EBE NSW member from a remote areas of NSW to attend the 2017 EBE NSW Economics Update Conference.

EBE NSW continued the selling of the following **EBE NSW publications** this year which are designed to enhance teaching and learning programs in schools:

- The EBE NSW Book of Economics Questions for HSC Students
- Annual EBE Trial HSC Examinations (Business Studies, Economics and Legal Studies). The EBE NSW Trial HSC Examinations give EBE Directors another opportunity to share their expertise and experience with members.

“The EBE Journal – Journal of the Economics and Business Educators NSW” continues to be provided in an electronic format which is accessible by members on the EBE website. Past issues of the journal are also available on the website, which enables members to access professional reading and resources which are available in the journals. I would like to thank EBE NSW Director, Mai Ni Pham, for all her work on “The EBE Journal” as the Editor and all the contributors to the journal this year. EBE NSW has a long history of providing a journal to members and we are committed to continuing this EBE NSW membership benefit into the future.

We continued to run the **CPA Australia Plan Your Own Enterprise Competition** in NSW this year in association with Business Educators Australasia, which enables students in NSW and around Australia to develop their business planning skills. I would like to thank our PYOE NSW Coordinator, Nicholas Ward, for all his work in coordinating the competition in NSW this year, including the coordination of the NSW short listing process. I thank CPA Australia for judging the NSW finalists.

We were able to recognize the PYOE NSW winners at our annual NSW awards ceremony on 27 September 2017 at the Sydney office of CPA Australia. At the ceremony prizes and certificates were awarded to the NSW student winners and their teachers.

CPA Australia sponsors the PYOE Competition and I acknowledge its support of students and teachers through this competition. This competition is an excellent way for EBE to interact directly with students of the courses we represent and their parents.

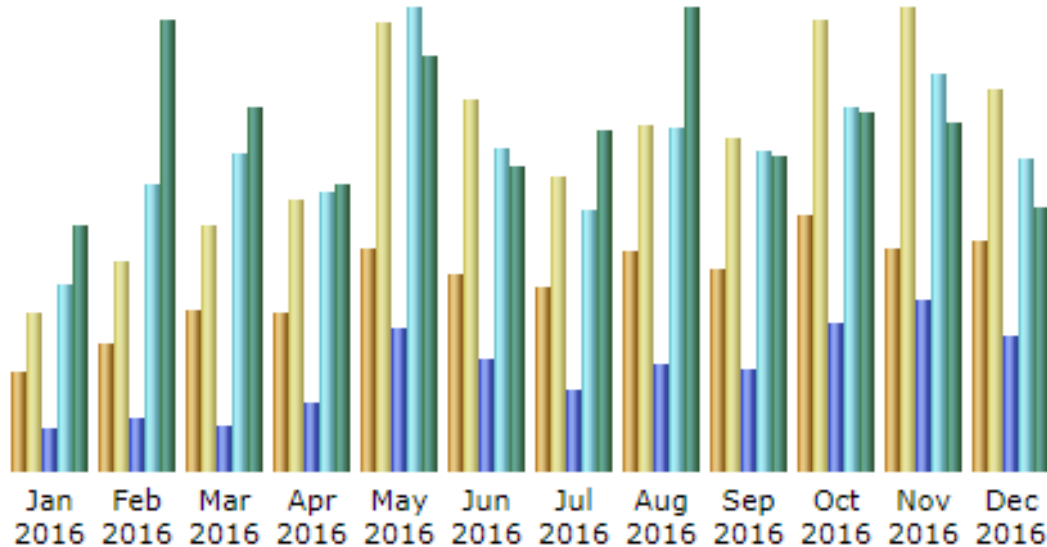
Another way we are interacting directly with students and their parents is through our **HSC student seminars** at the 2017 HSC and Careers Expo and the 2017 Western Sydney Careers Expo (organized by “Resources for Courses”). We provide these seminars free of charge, enabling students and their parents to hear about strategies to maximize their examination marks in the courses we represent and support. EBE NSW Directors Joe Alvaro and Greg Hannelly presented the student seminars this year.

The **EBE NSW website** continues to be a major source of up to date information in relation to the vision and goals of EBE NSW. We outsource the upkeep of the technical side and design of the website to our webmaster, Rob Berry, while maintaining oversight of the content that appears on the website. As can be seen in the graphs below the EBE website attracts many visitors.



EBE NSW Website Statistics as at as at 19 November 2017

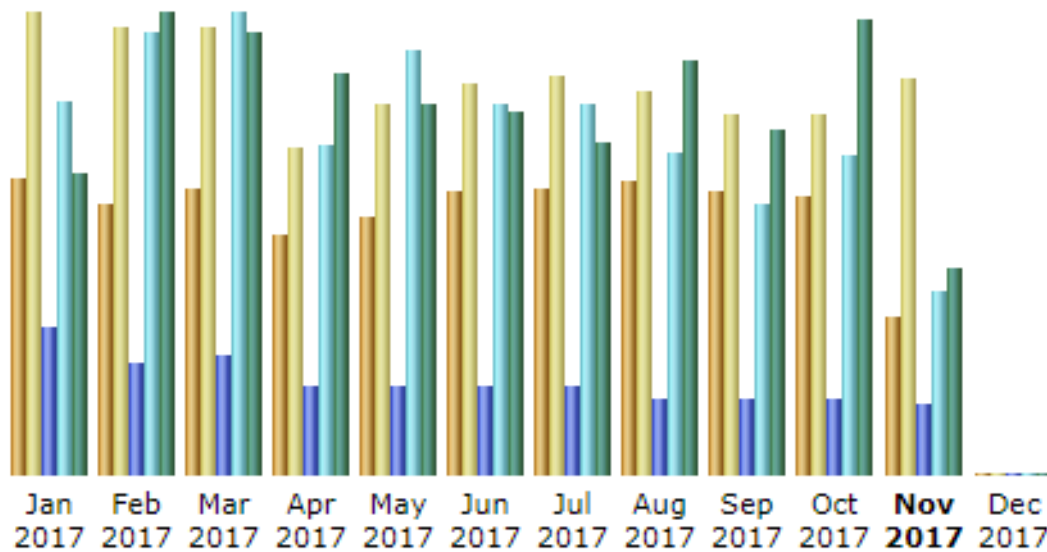
Monthly history



| Month | Unique visitors | Number of visits | Pages | Hits | Bandwidth |
|--------------|-----------------|------------------|----------------|----------------|-----------------|
| Jan 2016 | 716 | 1,140 | 4,224 | 18,603 | 1.79 GB |
| Feb 2016 | 923 | 1,511 | 5,165 | 28,516 | 3.31 GB |
| Mar 2016 | 1,155 | 1,772 | 4,475 | 31,702 | 2.66 GB |
| Apr 2016 | 1,141 | 1,964 | 6,810 | 27,839 | 2.10 GB |
| May 2016 | 1,609 | 3,243 | 14,276 | 46,132 | 3.04 GB |
| Jun 2016 | 1,417 | 2,678 | 11,184 | 32,250 | 2.23 GB |
| Jul 2016 | 1,329 | 2,133 | 8,061 | 26,039 | 2.50 GB |
| Aug 2016 | 1,582 | 2,501 | 10,531 | 34,213 | 3.39 GB |
| Sep 2016 | 1,454 | 2,405 | 10,015 | 31,912 | 2.30 GB |
| Oct 2016 | 1,841 | 3,265 | 14,769 | 36,366 | 2.63 GB |
| Nov 2016 | 1,617 | 3,347 | 17,114 | 39,559 | 2.56 GB |
| Dec 2016 | 1,663 | 2,763 | 13,549 | 31,073 | 1.93 GB |
| Total | 16,447 | 28,722 | 120,173 | 384,204 | 30.44 GB |



Monthly history



| Month | Unique visitors | Number of visits | Pages | Hits | Bandwidth |
|-----------------|-----------------|------------------|---------------|----------------|-----------------|
| Jan 2017 | 1,948 | 3,046 | 12,619 | 31,609 | 1.99 GB |
| Feb 2017 | 1,778 | 2,961 | 9,471 | 37,458 | 3.06 GB |
| Mar 2017 | 1,894 | 2,946 | 10,229 | 39,191 | 2.93 GB |
| Apr 2017 | 1,587 | 2,156 | 7,426 | 28,077 | 2.66 GB |
| May 2017 | 1,699 | 2,438 | 7,437 | 35,984 | 2.46 GB |
| Jun 2017 | 1,865 | 2,587 | 7,481 | 31,530 | 2.40 GB |
| Jul 2017 | 1,883 | 2,630 | 7,546 | 31,432 | 2.19 GB |
| Aug 2017 | 1,941 | 2,531 | 6,481 | 27,413 | 2.74 GB |
| Sep 2017 | 1,878 | 2,379 | 6,339 | 22,939 | 2.29 GB |
| Oct 2017 | 1,840 | 2,385 | 6,507 | 27,094 | 3.02 GB |
| Nov 2017 | 1,046 | 2,614 | 5,910 | 15,605 | 1.36 GB |
| Dec 2017 | 0 | 0 | 0 | 0 | 0 |
| Total | 19,359 | 28,673 | 87,446 | 328,332 | 27.09 GB |

We have also continued to produce regular **e-newsletters** which are emailed to members, enabling them to receive all the latest news with regards to the teaching and learning of Economics, Business Studies, Commerce, and Legal Studies directly into their email inbox.

Acting as a voice on matters of significance to Economics, Business, Legal and Commerce educators is an important aspect of the EBE NSW Strategic Plan 2015-2017. EBE NSW is well placed to improve the quality of our courses and respond to changes in the area of education as we have members who are teachers in schools, active in the classroom, committed to their students and passionate about the curriculum. Areas of advocacy this year have included:

- A letter to and response from the former NSW Minister for Education, Adrian Piccoli regarding the NESA current planning in relation to plans to implement the Australian Curriculum for Economics and Business and the Australian Curriculum for Civics and Citizenship in NSW. EBE NSW has also been communicating with NESA about this area on behalf of members.
- A submission to the NESA 2017 Consultation - Draft NSW Supplementary Documentation: Subject Content Knowledge Requirements (Revised).
- A submission to the Australian Securities and Investments Commission (ASIC) National Financial Literacy Strategy Consultation 2017 (October 2017).
- Signing the Copyright Agency Open Letter to oppose the Productivity Commission's recommendations on copyright in Australia because it will affect the ability of teachers to create high quality resources for teachers.

EBE NSW is currently preparing submissions for the 2017 NESA Review of the Commerce Syllabus and the 2017 NESA Syllabus Development Process Consultation.

I represent EBE NSW on the **Australian Taxation Office Individuals Stewardship Group**. This is the Australian Taxation Office's peak consultation group for individuals as a means of improving the administration of Australia's tax and super systems in ways that benefit the national interest. Members are drawn from groups that represent or advise individuals, or are individual taxpayers themselves. The members of the group provide advice and experience to the ATO executive, who also may convene smaller ad-hoc groups or one-on-one arrangements to obtain advice on specific matters. Through this group I am able to express the needs and interests of teachers and their students with regards to teaching and learning about taxation related content in the curriculum.

I represent EBE NSW on the **Reserve Bank of Australia Educators Advisory Panel**. The Educators Advisory Panel was established by the Reserve Bank in this year. The role of the EAP is to provide expert guidance to the Bank on matters of education so as to inform the Bank's educational initiatives.

EBE NSW is a member of the **Change Agents Working Together Group of Educators: Human Society and its Environment (HSIE), Professional Associations and Tertiary Educators**. I represented EBE NSW at the 17th Annual Meeting of this group in November this year. HSIE professional teaching associations, tertiary educators and curriculum authorities in the area of HSIE came together to discuss the HSIE learning area, learn from each other and discuss ways HSIE professional teaching associations could support HSIE pre-service teachers. Tertiary educators and professional teacher associations such as EBE NSW are an essential link between teachers, schools and the curriculum. EBE NSW recognizes the importance of connecting with the future teachers of the courses we support who are studying at university and promoting the importance to them of becoming a member of EBE

NSW. This year we continued to offer a student teacher membership category which is heavily discounted and student membership discounts to all our professional development courses.

I acknowledge the continued support provided to EBE NSW by **Business Educators Australasia**, its umbrella national subject association. Our connections to BEA are important to teachers and students in NSW because this is the channel through which we increasingly have input into matters relating to the Australian curriculum and other critical national matters which impact on us here in NSW. In addition, these connections enable us to offer the CPA Plan Your Own Enterprise Competition to our members and their students. I would like to thank the President of BEA, Tony Kuc and the Executive Officer of BEA, Christine Reid, for their leadership of BEA as they work with teachers from across Australia.

This year we were informed by the NSW Department of Education that we would need to vacate our Ryde premises by the end of 2017 as the buildings on the land are going to be demolished. The Board has made a decision to **restructure the EBE NSW Office** and use the services of the Professional Teachers Council NSW to manage the EBE NSW Office from 2018. Our part time office staffmembers, Annette Davies and Alan Hearle, will be leaving EBE NSW at the end of 2017. Annette and Alan have shared the vision of the association and made significant contributions to helping the association achieve its goals over many years. I am grateful for their many years of dedication and service to the association and wish them all the best for the future.

EBE NSW is in a healthy **financial position** and full details will be available in the audited accounts of the association which will be available for members at this Annual General Meeting.

Greg Hannelly and Glenn Walker have notified the Board of their intention to resign from the Board this year. I thank them both for their contributions to the association as Directors.

EBE NSW is highly respected and recognised. Despite this and our many achievements we cannot afford to be complacent as we look to the future. Funding by the government for many significant projects in the area of education continues to decrease, educational change continues to increase and teacher associations like EBE NSW are being called upon to do more and more with limited resources. Many **challenges and opportunities** await us in the future:

- We need to continue to pay attention to developments in the area of education which impact on our members at the Federal and NSW Government levels and make our views known when appropriate.
- We need to continue to monitor the development of the Australian Curriculum: Economics and Business and Australian Curriculum: Civics and Citizenship here in NSW as NESA considers its response to these curriculum developments.
- We need to ensure that our professional development courses are responsive to emerging teaching and learning strategies and technologies.

- Opportunities will develop for us as all teachers begin to move to the Australian Professional Standards for Teachers from 2018 making accreditation integral to teachers' progression and remuneration. This all has potential to build our capacity to provide professional learning opportunities to a wider audience.
- We need to continue to pay attention to governance issues and update our constitution.
- We need to continue to maintain the financial stability of our association and invest our finances more wisely so as to generate greater returns and to consider further ways we can use funds to add more value to membership of EBE.
- We must be on a path of continuous improvement, maintain high standards in all we do and continue to encourage and develop excellence in the teaching and learning of Economics, Business Studies, Legal Studies and Commerce, which we know are subjects that contain critical and powerful knowledge and skills that we want young people to leave school with and build on throughout their lives.

EBE NSW has been an active association over the past year, representing and supporting teachers and students of the NESA Economics, Business Studies, Legal Studies and Commerce courses. At the 2017 Professional Teachers' Council NSW Presentation Evening, EBE NSW was presented with a **Certificate of Appreciation** "in recognition of the association's voluntary contribution during 2017 to quality education, the students of NSW and the teaching profession".

The teaching and learning of the courses we represent and support would continue without EBE NSW but I would argue the quality of the lessons in classrooms and teacher capacity and confidence with regards to these courses would suffer if EBE NSW did not exist. Our association has made a very significant contribution to education this year and has played a significant part in furthering the teaching profession and assisting teachers to improve student learning outcomes.

I again thank all the EBE NSW Board members and the EBE NSW office staff for their efforts this year and for assisting me in my role as President. I also thank all the EBE NSW members who are driven to ensure their students reach their full potential.

Joe Alvaro
President - Economics and Business Educators NSW
11 December 2017